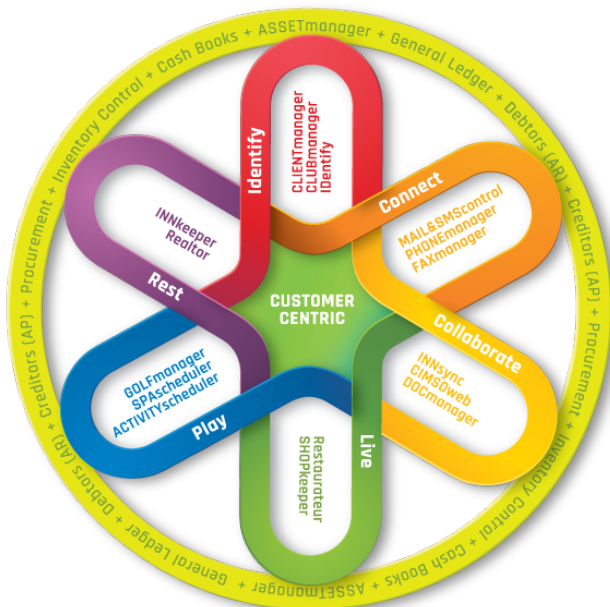


## THE ASSET REGISTER AND MANAGER

- ✓ Dynamic, customisable, large item quantity asset register
- ✓ Customisable asset lists, asset types and asset containers
- ✓ Rule based depreciation calculations and schedules
- ✓ Asset management console with search and filter options
- ✓ Asset movement tracking with serial numbers and location links



## SEAMLESS INTEGRATION



## CUSTOMER-CENTRIC DESIGN

The CIMSO ERP Software toolbox provides the tools you need to control and improve your business

- **Identify** Client Relations Management with customer identification and preferences
- **Connect** Direct individual or bulk blast e-mail, SMS, fax and snail mail communications
- **Collaborate** Live data synchronization to all offices with WEB and mobile device interfaces
- **Live** Touch screen points of sale for food and beverage and retail trade outlets
- **Play** Scheduling and management facilities for Golf, SPA, and leisure activities
- **Rest** Lodging reservations, property management (PMS), Leasing and Timeshare
- **Finance** Financial control to balance sheet with GL, AR, AP, stock, procurement and cash books

## VALUE PROPOSITION

- Next generation technology → Evolving and increasingly efficient systems
- Customer centric design → Improved client service delivery and satisfaction
- Seamless integration → Real-time financial and operational reporting
- Complete financial control → Ensures transparency and accountability
- Enterprise resource planning → Complete and efficient management control
- Reduced cost of ownership → Improved ROI and bottom line profit margins



**Operating System:** Windows 7 or later (64-bit Windows 10 recommended)  
**Supported Database:** Microsoft SQL Server 2008 or later (2016 recommended)  
**Minimum Hardware Requirements:** 1.5GHz CPU, 4GB RAM, 15GB disk space



W: [www.cimso.com](http://www.cimso.com)  
 E: [marketing@cimso.com](mailto:marketing@cimso.com)

A fixed asset register for large item quantity asset control, location tracking, warranty management and depreciation determination.

### FEATURES:

- Dynamic, customizable asset register with asset grouping and status facilities
- Content rich asset management console with extensive asset filter & search options
- Customizable asset lists, asset types and large item quantity containers
- Rule based depreciation calculations and schedules
- Customizable properties for each user defined asset type
- Asset location tree view with assets linked to geographic locations
- Asset movement tracking with serial number links for warranty management
- Asset enquiry console with user defined reports, printing and export to CSV/Excel

### SEAMLESS INTEGRATION to:

- **CLIENTmanager** CRM, business administration, communications and accounting control
- **CLUBmanager** membership and loyalty administration, recreational activities and wellness management
- **WORKSHOPmanager** workshop management system for vehicle repairs, job cards, stock control and staff assignment
- **HOUSEkeeper** housekeeping management system for commercial and private properties, with staff assignment
- **PHONEmanager** telephone call and billing management
- **FAXmanager** facsimile transmission and receiving with scheduling and status management
- **CIMSOweb** on-line customer profile management and activity scheduling
- **DOCmanager** document filing and management system
- **Restaurateur** food and beverage (F&B) points of sale
- **SHOPkeeper** retail points of sale for shops and superettes
- **GOLFmanager** T-bookings, green fees and competition scoring
- **SPAScheduler** SPA and wellness management
- **ACTIVITYscheduler** recreational activities scheduler
- **INNkeeper** lodging reservations, room rates, front office and City Ledger management and control system
- **Realtor** real estate register with leasing and time share
- **INVENTORYmanager** products services and recipe stock control with procurement
- **BACKoffice** creditors (AP), General Ledger (GL) and Cash Books (CB)

Africa	Cape Town	marketingza@cimso.com	+27 21 852 2388	UTC+2hrs
Indonesia	Jakarta	marketingid@cimso.com	+62 21 5793 6155	UTC+7hrs
Asia	Singapore	marketingsg@cimso.com	+65 6604 7245	UTC+8hrs